



Vredo Dodewaard bv
Welysestraat 25a
6669 DJ Dodewaard (NL)
Tel. +31(0)488411254
info@vredo.com

Your fields,
our passion

vredo.com

ART.NUMBER

DETAILS

C001098

VREDO VT7138

Vredo VT7138

- Machinenumber: 0113.028
- Year of construction: 2023
- Hours: ±1.900
- Tyre pressure inflation system
- Trimble TMX RTK
- Prepared for Bomech
- Turbopump (16m³ per minute)

Specification:

- Engine Scania DC16 317A V8, 522 kW / 710 hp water cooled
- EU Stage 5 with SCR (AdBlue) and DPF
- Max. Torque 3320 Nm@ 1400 rpm
- Transmission: Vredo VVT700 CVT stepless transmission
- Two forward speed ranges, 0-20 kph and 0-40 kph
- Reverse speed 0-17 kph
- Fuel tank capacity 845 Litres
- AdBlue tank capacity 69 Litres
- Full air suspended Comfort Claas cab, incl. radio/CD player with Bluetooth (with external microphone for phone calls)
- Fully automatic climate control
- Windscreen wipers are mounted on the left and right door of the cabin
- Operational console in RH armrest, fitted on seat, incl. Drive- and Slurry system, Joy-Stick and Touchscreen-Terminal
- All machine and slurrsystem data on Hydac touchscreen terminal
- Air suspended Grammer Maximo Super-Comfort seat
- Instructor seat
- Electrical adjustable and heated mirrors, incl. wide angle mirror
- Efficient drivetrain through Ecomode
- Cruise control with anti-stall control
- Continuously all wheel drive with lockable length differential for front axle and tandem rear axles
- Front and rear axles with lockable cross differential, pressure operated switch in cabin
- Steering: 6-wheel and Crab steer (Tandem wheels partly crab steer)
- Tyres Mitas 900/60 R42 SFT CHO 192 A8
- Hydraulic suspended front axle with automatic levelling and pendule absorption
- Tandem rear axles with mechanical penduling
- 3-Point, CAT 3 dimensions, double working hitch at rear, slewed with crab steer, torsion suspended CAT 4 quick couplers for toolbar suspension. Active controlled automatic ground adaption with pressure or free ground following or floating
- Lift height 660mm, max height ca. 1m with 900-tires
- Lift capacity in Balls max. 105kN (10.5 ton) through 75 kN (7,5 ton)
- Manual control of 3-point hitch at rear fender of the machine
- Automatic greasing system with 4L grease reservoir
- 1 Pump for closed loop system max 267 l/min, 420 bar. Slurrypump drive gear
- 2 LS-Pumps, 170 l/min each, at 200 bar, for external spool valves and internal functions such as suspension, steering, 3-point hitch, cooling, etc.
- 4 Double/Single rear hydraulic spool valves, operated from cabin
- Standard pressure free return line 3/4"
- Reversing alarm
- Rear camera and LCD-colour monitor with speaker in cabin
- Connection for second camera at the rear of the Trac
- Telescopic cylinder for tipping slurry tank from chassis
- 2 Rotating beacons on cabin
- LED headlights in front bumper
- 2 LED work lights behind cabin
- 2 LED work lights under the cabin
- 4 LED work lights in cabin roof
- Compressed air system for cleaning cabin and cooling unit
- Quick coupling for air at the rear of the Trac
- Fire extinguisher, 5 kg



Vredo Dodewaard bv
Welysestraat 25a
6669 DJ Dodewaard (NL)
Tel. +31(0)488411254
info@vredo.com

**Your fields,
our passion**

vredo.com

OPT. VT7138 TRIMBLE GFX/RTK

- Trimble Autopilot RTK with GFX-750 terminal (10,1")
- GFX-750 Display with Precision IQ software
- NAV-900 GNSS Antenna mounted above 3 point hitch swivel point
- Complete integrated in steering system Trac
- Crab-steer functionality
- The Trimble has standard the Glonass, Galileo and BeiDou GPS satellites
- Standard EGNOS signal 0-30 cm precision (absolute 0-2 mtr.)
- Precision with RTK correction signal 0-2 cm (absolute 0-2,5 cm)
- Excl. RTK correction signal license
- System is prepared for correction signal via a SIM-card modem
- RTK agreement from supplier (Trimble) to discuss together with customer

GRAMMER MAXIMO EVOL. ACT. SEAT

- Grammer Maximo Evolution Active seat MSG 95 EL/742 with climate system and weight system.

EXTRA OPERATION LIGHTKIT FENDERS

- 2 additional LED working lights on fenders behind cabine

TPIS 7138-3 MOTOR COMP.

Tyre pressure inflation system by motor compressor 850 ltr/min by 4 bar and 1500 rpm

- System for standard 900 tyres with 3,0 m outside dimension
- Pipelines mounted at the outside of the tyres, removable for transport
- Including control from cabin
- 2 different settings on display for driving in the field or on the road
- The actual pressure values can be seen on the touchscreen terminal, pressure front and rear axles displayed separately

OPTION TÜV VT 7138-3

Modifications in order to "Deutschen Rechtsvorschriften für Straßentransport"

- Emergency steering with electrical hydraulic pump
- Warning signs in the front and rear of machine
- License-plate holder at the rear of machine
- Indication of max. speed
- Wheel chocks
- Tüv approval 40 kmh with certificate

TANK VT7138-3 ZBV 32000Zs FLEXTANK

The tank ZBV 32000Zs is equipped with the following as standard:

- Construction of gel-coated glass-fiber polyester with 5 slosh baffles
- Tank volume 25 m³, with top slurry bag (7 m³) till 32m³
- Tank hydraulically tippable
- Tank easy to demount because of fitment on Twist-Locks
- Tank with open aeration/de-aeration
- Automatic switch of pump at loading or unloading
- Mechanical level gauge and electronically displayed
- Load volume to be pre-set at terminal
- 8" 3-Way valve at rear of tank for load, unload and recirculating
- LED Worklights at rear of tank
- Rotating beacon and camera on backside of tank
- 1 inspection hatch on backside of the tank

ZBV 32020Zs PREP. FOR BOMECH 24-30M

- Brackets and hooks on tank, prepared for hydraulic operation of brackets
- 4-point cross connection on back of tank with stable framework
- Crab steering possible
- Slurry distribution box with quick coupling
- 8" slurryhose (fire hose)
- Electro / hydraulic modification
- Software modification



Vredo Dodewaard bv
Welysestraat 25a
6669 DJ Dodewaard (NL)
Tel. +31(0)488411254
info@vredo.com

**Your fields,
our passion**

vredo.com

PUMP FILTER UNIT PF12000

Specification:

- Complete unit mounted at front of chassis
- Vogelsang positive displacement pump VX186-520QD 12.000 ltr/min with hydrostatic drive
- Vogelsang pump equipped with axial wear plates
- Vredo slicing filter FT 6200 with hardened steel interior and emptying device to be operated from cabin
- 10" DN250 front arm slewable 135 degrees
- Return turning provision of the slurry pump
- Loading of tank at reduced variable engine speed
- Electro-hydraulic operation by multi-grip joy-stick
- Configuration of slurry system parameters on terminal
- 6" reload connection in front of PF-unit
- Reloadarm automation
- LED headlights in front bumper
- Bumper standard equipped with extra (flexible) step

TELESC. RELOAD DOCKING ARM PF12000

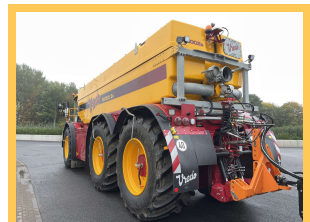
10" telescopic reload docking arm 1,6 m extendible. Till ca. 7,2m measured from the front axle at a height of 4m

- With 10" docking ball
- 2 hydraulic cylinders to adjust length of docking arm
- Air operated sealing
- 4" aeration valve

OPTION CENTRIFUGAL PUMP IN PF12010

Centrifugal pump in the upper section on standard docking reloadarm:

- For more reload capacity up to 16.000 ltr/min
- Hydrostatic driven by a separate hydropump, till 200 hp power possible
- Aeration valve
- Works together with positive displacement in pump by-pass



Vredo

Your fields,
our passion

Vredo Dodewaard bv
Welysestraat 25a
6669 DJ Dodewaard (NL)
Tel. +31(0)488411254
info@vredo.com

vredo.com

